

Visual Story

Revue Stage



A visual story helps people prepare for a new experience or decide if this space or show works for them.

Table of content

You can click on any of them
and go straight to that page

[Where is the Revue Stage?](#)

[Getting to Revue Stage](#)

[Parking](#)

[Coming by Bus](#)

[50](#) or [4 - 7 - 84](#) or [10 - 14 - 16](#)

[Box Office / Front Door](#)

[The Lobby](#)

[Staff & Volunteers](#)

[Washrooms](#)

[Baby Change Table](#)

[Going into the Theatre](#)

[Inside the Theatre](#)

[Questions?](#)

[Credits](#)

Where is Revue Stage?

On Granville Island at 1601 Johnston St. it is in the back of the Public Market building

[This is a map of Granville Island](#)

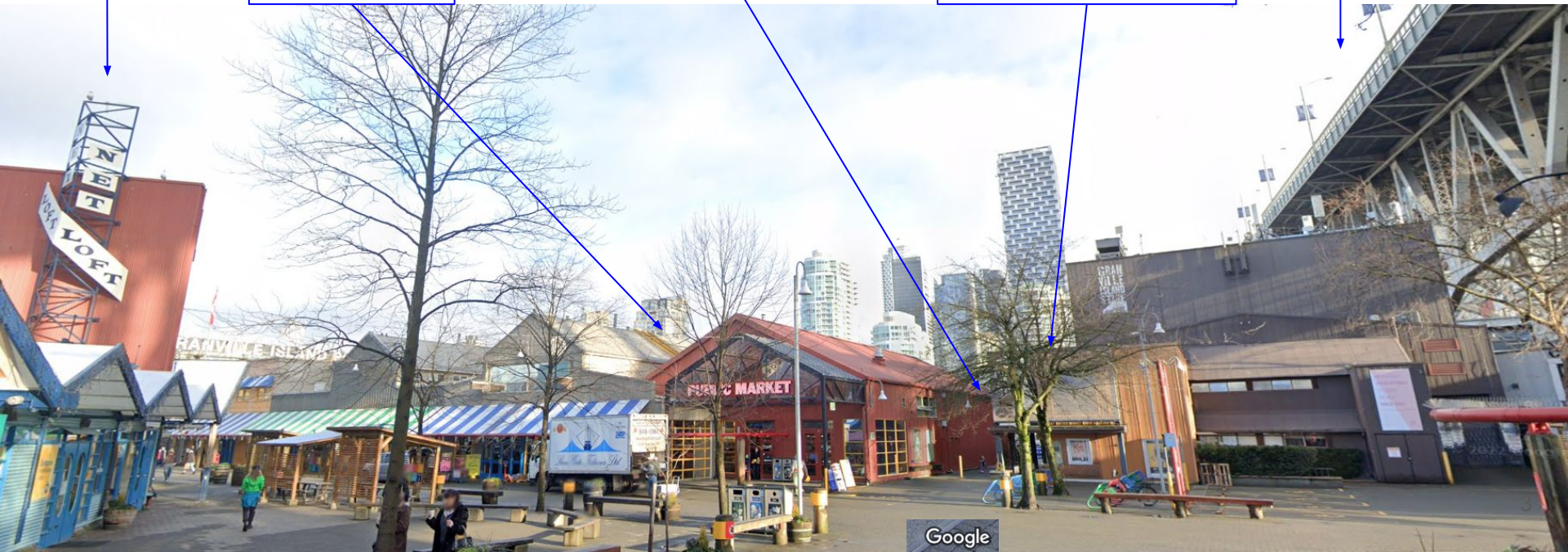
The Net Loft

Public Market

Revue Stage

Granville Island Stage

Granville street bridge



Accessibility

- Wheelchair users
 - The washrooms are accessible
 - Wheelchairs users can only sit in the front row
- Except for the front row, you need to use stairs to get to your seat, there is no railing for support
- There are no automatic buttons to open any of the doors

Getting to Revue Stage: lots of options

Walking

Granville Island is wonderful to walk to.
It is also nice to walk around but there are no real sidewalks so it can be confusing to know where to walk.

Biking

[Click here](#) to see where the closest bike racks are.

[Click here](#) to see where the free bike valet is.

[Click here](#) for pictures of the route on Granville Island

[View on Google Maps](#)

[Skip to Pictures of the Venue](#)

Driving/Parking

There is pay parking until 6pm everywhere on Granville Island. Usually you can find a spot easily.
[Click here more information](#) about parking.

Public Transportation

There are no busses that go onto Granville Island.
The closest bus stops are a 7-15 minute walk away.
[Click here](#) to see:

- Where the bus stops are
- Which busses stop there
- How to walk from the bus stop to the theatre

Bike Racks

The closest bike racks are in front of the Granville Island Stage box office next door

The Revue Stage is around the corner to the right here



There is also a bike valet service, go to the next page for information.

[Click here for pictures of what the route on Granville Island looks like.](#)

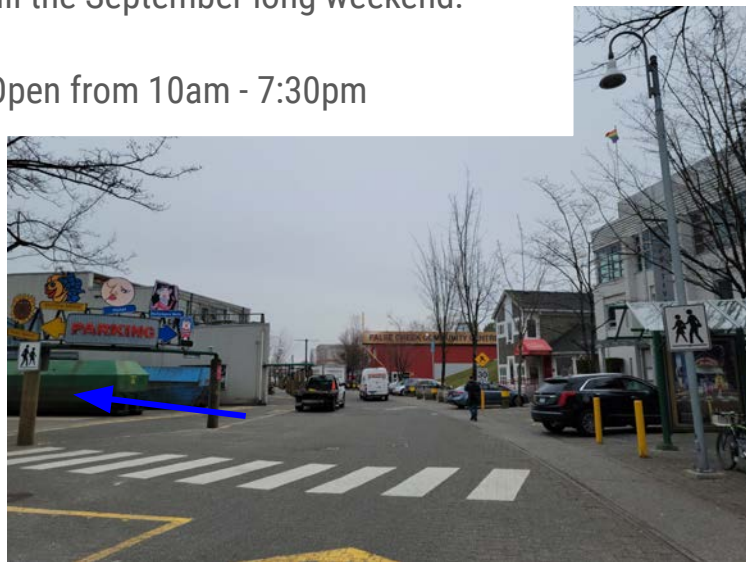
[Skip to Pictures of the Venue](#)

Bike Valet

The bike valet is free.

It is there from the May long weekend till the September long weekend.

Open from 10am - 7:30pm



It is in parking lot 55 on Old Bridge street.

Turn left at this sign to go there.



The bike valet is on your left.

[Skip to Pictures of the Venue](#)

Parking

- You need to **pay for parking** between 11AM - 6PM
To find out prices [click here](#)
- Parking is free before 11AM & after 6PM

There is a big parking lot on the other side of the public market



There are 4 **accessible parking spot** in front of the Granville Island Stage

[View on Google Maps](#)

Coming by Bus

Look up your bus route on [Google maps](#)

These are the busses that have stops close to Granville Island

- 50
[click here](#) for directions with pictures from the bus stop
- 4, 7, 14, 84
[click here](#) for directions with pictures from the bus stop
- 10, 16, N9, N10, N17
[click here](#) for directions with pictures from the bus stop

[Skip to Pictures of the Venue](#)



This is where the bus stops are.

Walking from the 50 Bus Stop

These are the two bus stops



Walk towards the Granville bridge



Head to the street that is right below the bridge, it is called Anderson Street

Go to the other side of Anderson Street
and turn left onto Anderson Street



[Click here for next part of the walk](#)

Walking from the 4, 7 and 84 Bus Stop

This is the
Westbound
bus stop.

Go to the next
page for the
route.



This is the Eastbound bus stop.
[Click here for pictures of the route.](#)

Walking from the 4, 7 and 84 Bus Stop.



Turn right you get off the bus and head along West 4th Ave towards Granville Bridge above you.



Cross Fir street and then cross Anderson Street and turn left onto Anderson Street.

[Click here for next part of the walk](#)

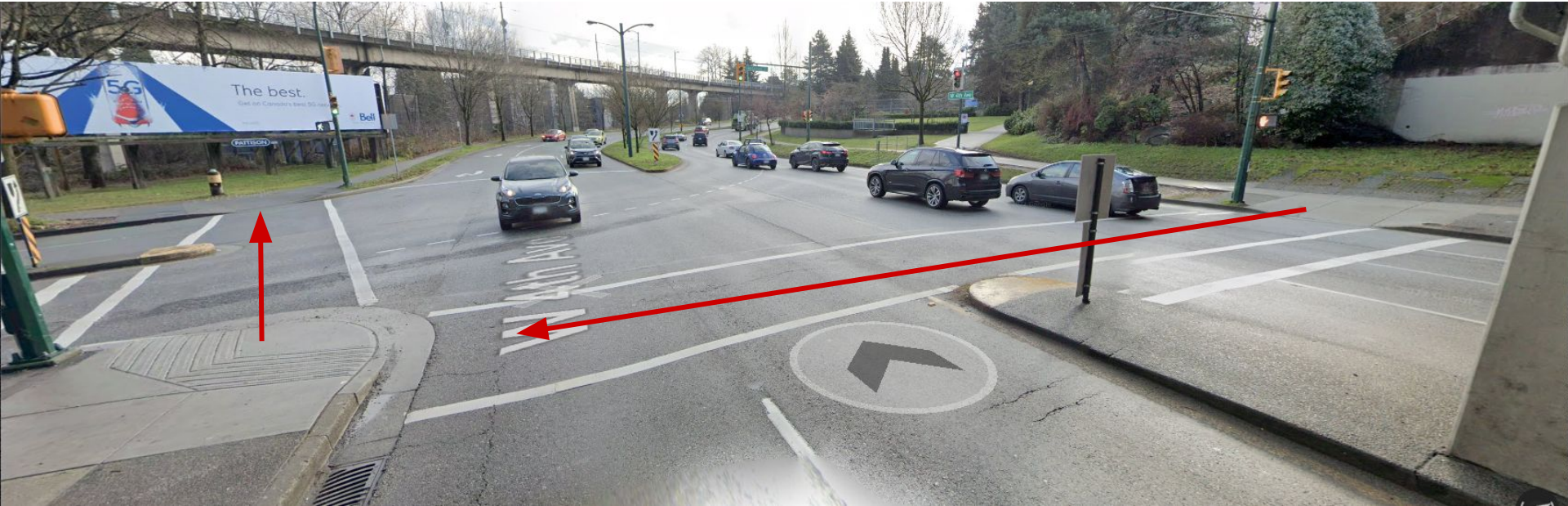


Walk towards the Granville bridge.



Use the crosswalk.
Go left again to keep going to the bridge.

Right after the bridge,
cross 4th avenue.



Then cross the street again, towards the big billboard.
There will be another picture on the billboard, it changes all the time.



After you cross the street, turn left.



Keep following the path.

[Click here for next part of the walk](#)

Walking from the 10, 14 and 16 Bus Stop on Granville Street

This is the Southbound bus stop.
Go to the next page to see the route.

This is the Northbound bus stop.
[Click here to see pictures of the route.](#)





This is what the Southbound bus stop looks like.
To get to the other side of the street there is a tunnel.



Walk away from the Granville Street,
down the path towards the park.



After a few feet turn right, into the tunnel.



At the end of the tunnel, go right.



After you come out of the tunnel,
turn left before the stairs.



Go up those stairs and turn right.

[Click here for next part of the walk](#)

Walking from the 10, 14 and 16 Bus Stop on Granville From the Northbound bus stop



This is Northbound bus stop.
Walk back along Granville Street,
away from the bridge.



After a few feet, turn left
and go down the stairs towards the park.



Right away, turn left down the first path in the park.



Keep going down the path through the park until you reach West 4th Avenue.



Cross West 4th Avenue at the lights.



At the other side, immediately turn right and cross Anderson Street.



As soon as you're across the street, turn left and go down the path.



Keep following the path.

Going to Revue Stage from the Granville Island entrance



You will see the big
GRANVILLE ISLAND
sign.



At the crosswalk cross
the street.





After the road bends to the right,
take the crosswalk
in front of The Keg.

Then turn left after the keg.



Granville Island Public Market

Keep following that road and after a little while you will see the Granville Island Market at the end of the road.



Walk between the Granville Island Stage
and the Public market
and the Revue Stage will be on your left





Box Office / Front door

You can pick up your tickets or buy tickets at the box office with the person at the lectern outside the front door



Someone will scan your ticket

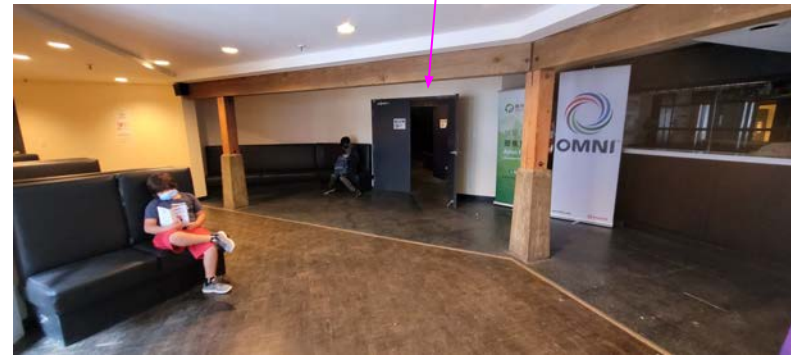


Sometimes there are a lot of other people waiting



The Lobby

Door to the theatre



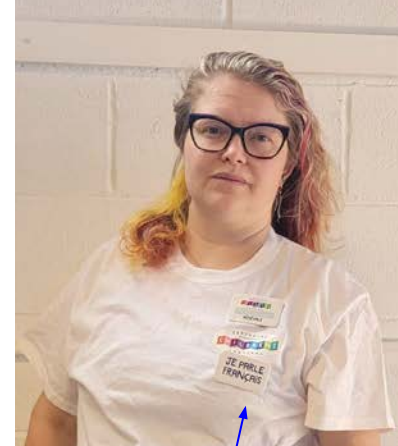
Staff & Volunteers

Our staff & volunteers will have a pin or lanyard or t-shirt with our logo.

If you need anything, ask them!



These are the different pins and badges →



These buttons also tell you if this person knows other languages

Washrooms



More
pictures
on the
next page

The washrooms at the Revue Stage this year
are the port-a-potties outside



Smaller port-a-potty



The port-a-potties don't have a sink, they only have hand sanitizer

Accessible port-a-potty



Baby Change Table

The a baby change table is in the lobby.
If there is no pillow, just ask the staff or
volunteers and they will get it for you.



Going into the Theatre

Go through these doors.

Then there will be
another set of doors.
It is like a mini hallway.



This is where you
will come inside
at the other side

Inside the theatre



This is what the theatre looks like.

You will sit on one of those seats.
There will be lots of other people too.

There will be different things on the stage
for every show.

Questions?

Do you have a question?
Do you need more information?

Send us an email:
info@childrensfestival.ca

Or you can call us Monday to Friday, 8:30 am to 4:00 pm:
+1 604 708 5655

Credits

This Visual Story was created with the help of a template created with the input of many consultants, patrons, artists and fellow arts organizations.

Special thanks to the PuSh International Performing Arts Festival, Intrepid Theatre, Vancouver Writers Fest, the Gateway Theatre and Jake Anthony.

Want to create a visual story for your show, event or venue?
Email Anika and she will share the template: access.activator@gmail.com

We welcome all feedback!
You can email access.activator@gmail.com and info@childrensfestival.ca