



## Visual Story Performance Works

A visual story helps people prepare for a new experience or decide if this space works for them.



# Table of content

You can click on any of them  
and go straight to that page

[Where is the Performance Works?](#)

[Accessibility](#)

[Getting to Performance Works](#)

[Parking](#)

[Coming by Bus](#)

[50](#) or [4 - 7 - 84](#) or [10 - 14 - 16](#)

[The Lobby](#)

[Box Office / Buying Tickets](#)

[Staff & Volunteers](#)

[Going into the Theatre](#)

[Inside the Theatre](#)

[Washrooms: Women's / Men's](#)

[Baby Change Tables](#)

[Chill Out Zone](#)

[Questions?](#)

[Credits](#)

# Where is Performance Works?

Performance Works is on Granville Island at 1218 Cartwright Street

[Click here to see a map of Granville Island](#)



This sign is the entrance to Granville Island.

It is across from  
the Granville Island Hotel



This is the Granville Island Hotel.

# Accessibility

- Performance works is wheelchair accessible including the washrooms
- Wheelchair users sit in the front row
- There are no automatic buttons to open any of the doors
- The box office counters are high  
There is no wheelchair appropriated box office window
- Except for the front row, you need to use stairs to get to your seat  
There is no railing for support

# Getting to Performance Works: lots of options

## Walking

Granville Island is wonderful to walk to. It is also nice to walk around but there are no real sidewalks so it can be confusing to know where to walk.

[Click here](#) for pictures of the route on Granville Island

## Biking

[Click here](#) to see where the closest bike racks are.

[Click here](#) to see where the free bike valet is.

[Click here](#) for pictures of the route on Granville Island

[Skip to Pictures of the Venue](#)

## Driving/Parking

There is pay parking until 6pm everywhere on Granville Island. Usually you can find a spot easily.

[Click here more information](#) about parking.

## Public Transportation

There are no busses that go onto Granville Island. The closest bus stops are a 7-15 minute walk away.

[Click here](#) to see:

- Where the bus stops are
- Which busses stop there
- How to walk from the bus stop to the theatre



# Bike Racks

The bike racks are close to the front door.



There is also a bike valet service, go to the next page for information.

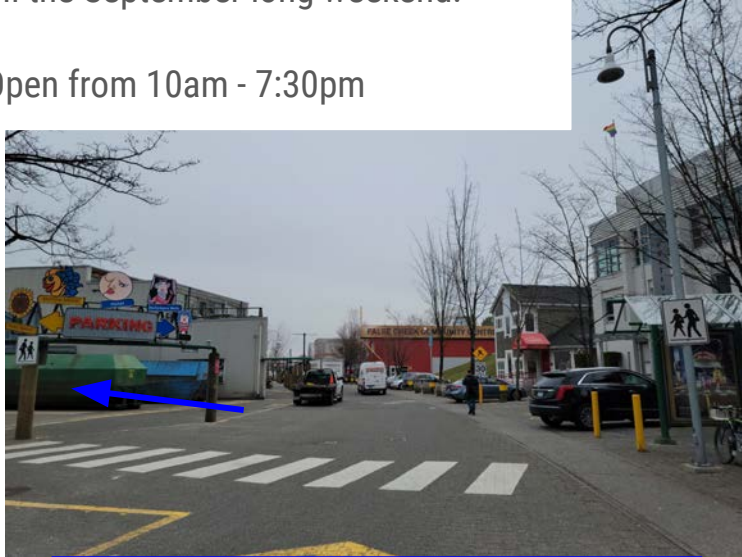
[Click here for pictures of what the route on Granville Island looks like.](#)  
[Skip to Pictures of the Venue](#)

# Bike Valet

The bike valet is free.

It is there from the May long weekend till the September long weekend.

Open from 10am - 7:30pm



It is in parking lot 55 on Old Bridge street.

Turn left at this sign to go there.



The bike valet is on your left.

[Skip to Pictures of the Venue](#)



# Parking

## [View Map on Google Maps](#)



- You need to **pay for parking** between 11AM - 6PM  
To find out prices [click here](#)
- Parking is free before 11AM & after 6PM
- The red boxes are the three closest parking lots  
On the next pages you will see some pictures of what the building looks like from the parking lots.
- There is one **accessible parking spot** right in front of the theatre door and another one nearby
- For directions with pictures to the lots and to the theatre from the lots, go to the next page

On the next pages you can see pictures of the parking lots.

And how to find Performance Works from the parking lot.



There is parking right in front  
of the Performance Works Building (F) on the parking map



You will see Performance Works in the distance from the parking lot to the North (N on the parking map)



Look for the Yellow Sign

The biggest parking lot is to the West

Front door



You won't see the Performance Works building because the blue building is in between.  
Walk back to the street and then you will see the building the yellow sign.

[Skip to Pictures of the Venue](#)

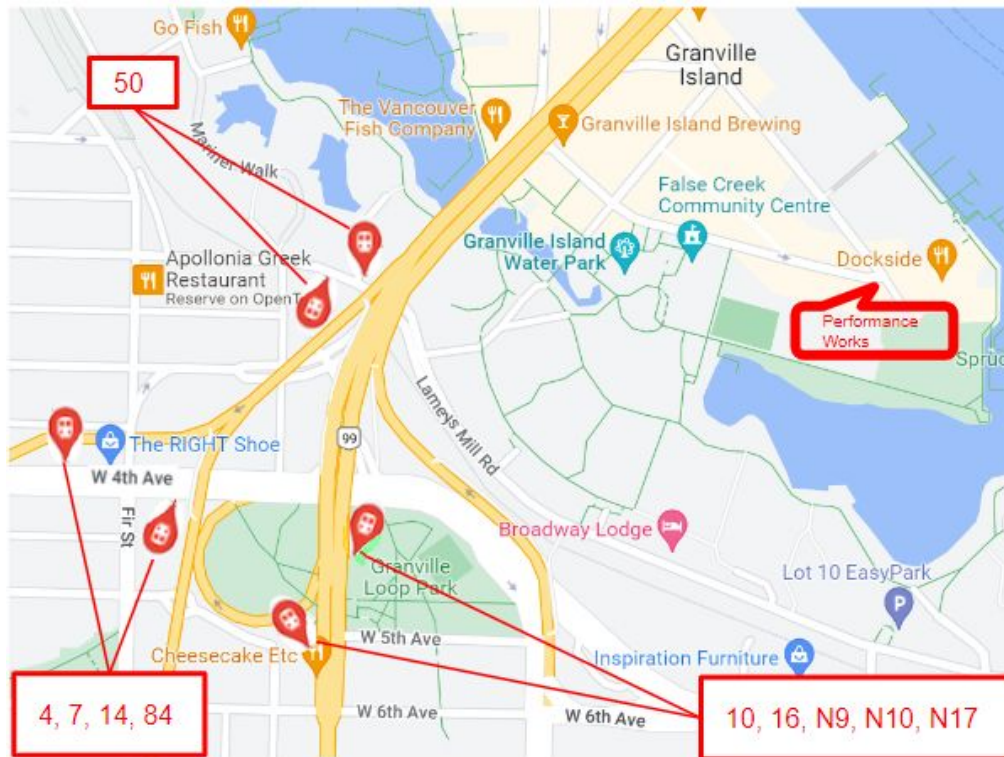


## Coming by Bus

Look up your bus route on [Google maps](#)

These are the busses that have stops close to Granville Island

- 50  
[click here](#) for directions with pictures from the bus stop
- 4, 7, 14, 84  
[click here](#) for directions with pictures from the bus stop
- 10, 16, N9, N10, N17  
[click here](#) for directions with pictures from the bus stop

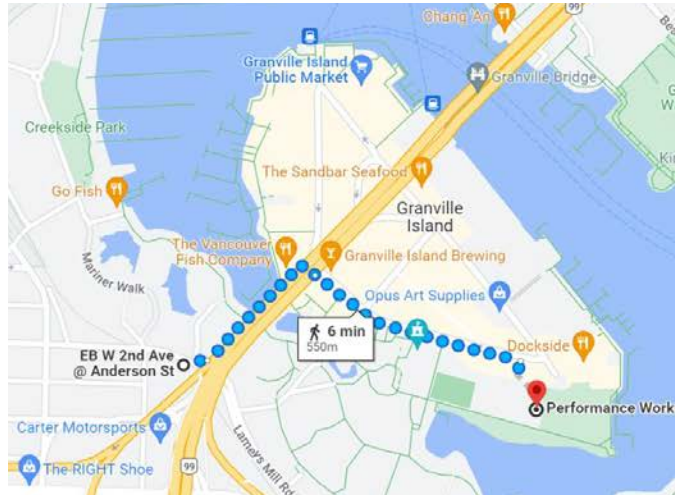


[Skip to Pictures of the Venue](#)

This is where the bus stops are.



## Walking from the 50 Bus Stop



Here is a map from the 50 Bus stops  
to Performance Works  
[See this on Google maps](#)

These are the two bus stops



## Walk towards the Granville bridge



Head to the street that is right below the bridge, it is called Anderson Street

Go to the other side of Anderson Street  
and turn left onto Anderson Street



[Click here for next part of the walk](#)



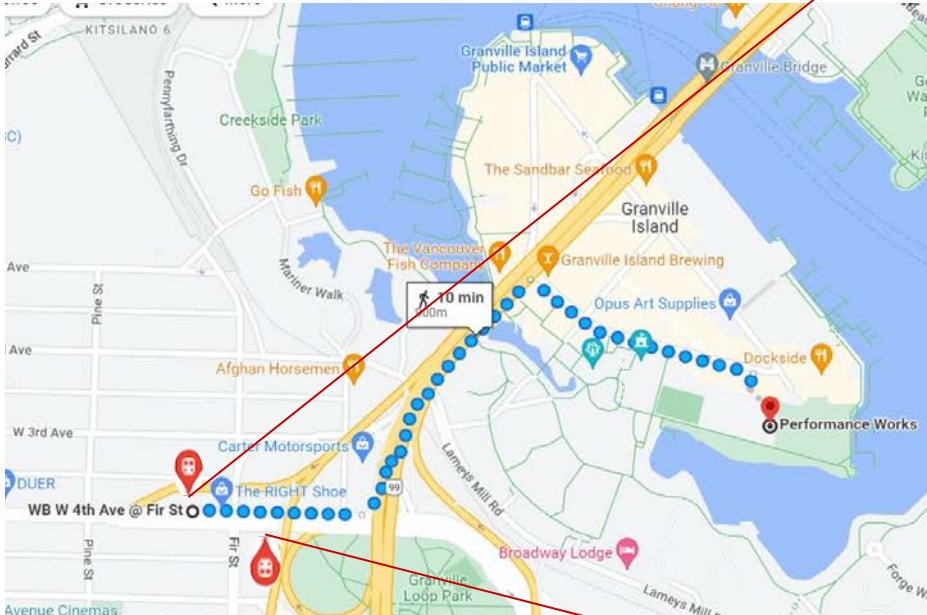
Walking from the 4, 7 and 84 Bus Stop.

[View map on Google maps](#)

Note: Google maps may provide a different route

This is the  
Westbound  
bus stop.

Go to the next  
page for the  
route.



This is the Eastbound bus stop. [Click here for the route.](#)



## Walking from the 4, 7 and 84 Bus Stop.



Turn right you get off the bus and head along West 4th Ave towards Granville Bridge above you.



Cross Fir street and then cross Anderson Street and turn left onto Anderson Street.

[Click here for next part of the walk](#)

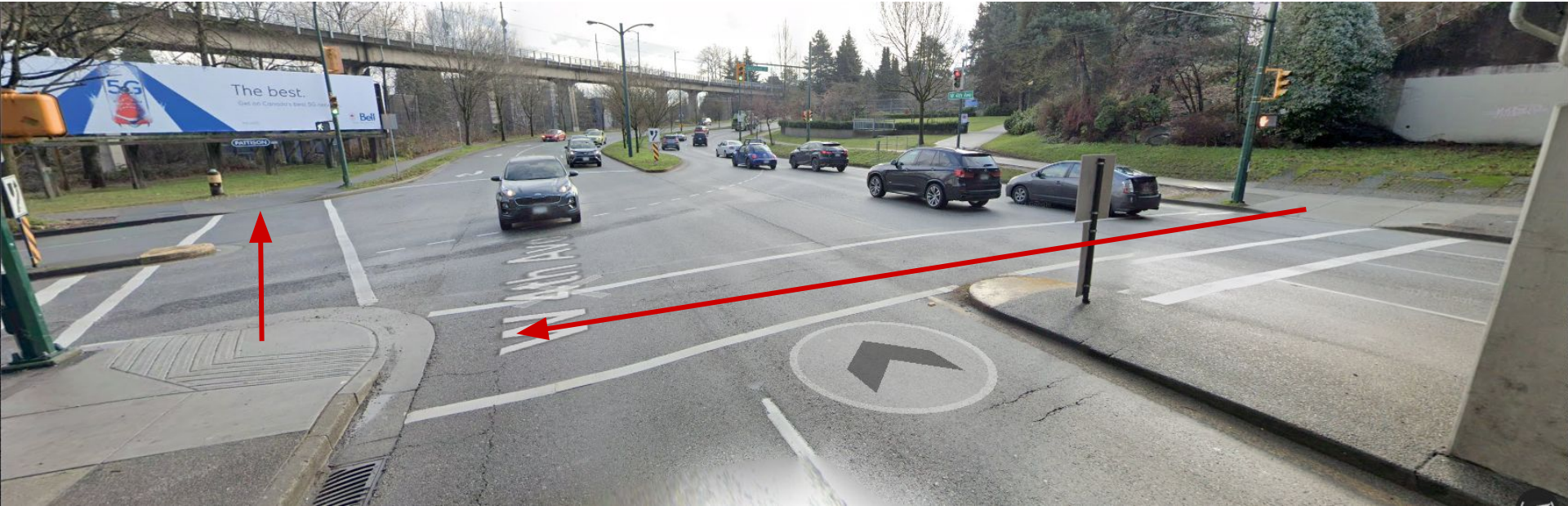


Walk towards the Granville bridge.



Use the crosswalk.  
Go left again to keep going to the bridge.

Right after the bridge,  
cross 4th avenue.



Then cross the street again, towards the big billboard.  
There will be another picture on the billboard, it changes all the time.





After you cross the street, turn left.



Keep following the path.

[Click here for next part of the walk](#)



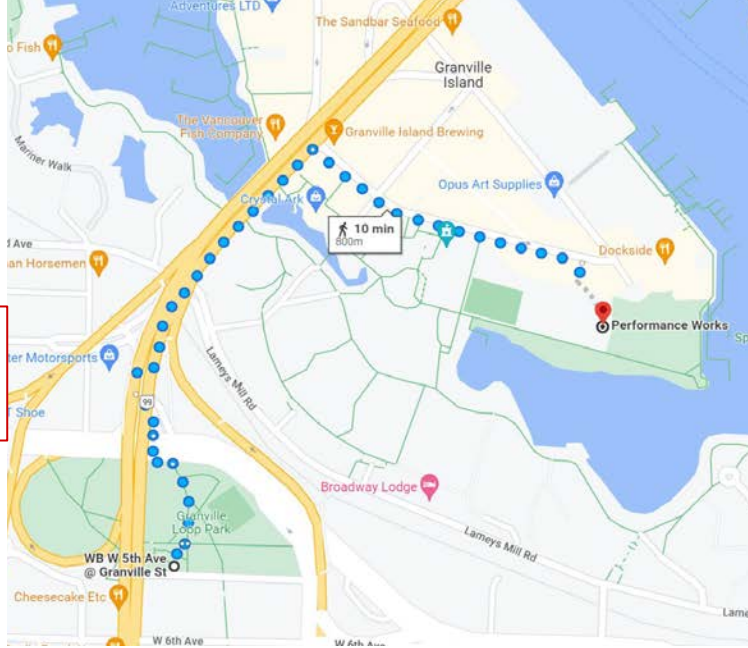
# Walking from the 10, 14 and 16 Bus Stop on Granville Street

[Click here to view map on Google maps](#)

Note: Google maps may show a different route

This is the Northbound bus stop.  
[Click here to see pictures of the route.](#)

This is the Southbound bus stop.  
Go to the next page to see the route.





This is what the Southbound bus stop looks like.  
To get to the other side of the street there is a tunnel.



Walk away from the Granville Street,  
down the path towards the park.





After a few feet turn right, into the tunnel.





At the end of the tunnel, go right.



After you come out of the tunnel,  
turn left before the stairs.



Go up those stairs and turn right.

[Click here for next part of the walk](#)

## Walking from the 10, 14 and 16 Bus Stop on Granville From the Northbound bus stop



This is Northbound bus stop.  
Walk back along Granville Street,  
away from the bridge.



After a few feet, turn left  
and go down the stairs towards the park.





Right away, turn left down the first path in the park.



Keep going down the path through the park until you reach West 4th Avenue.



Cross West 4th Avenue at the lights.



At the other side, immediately turn right and cross Anderson Street.



As soon as you're across the street, turn left and go down the path.



Keep following the path.



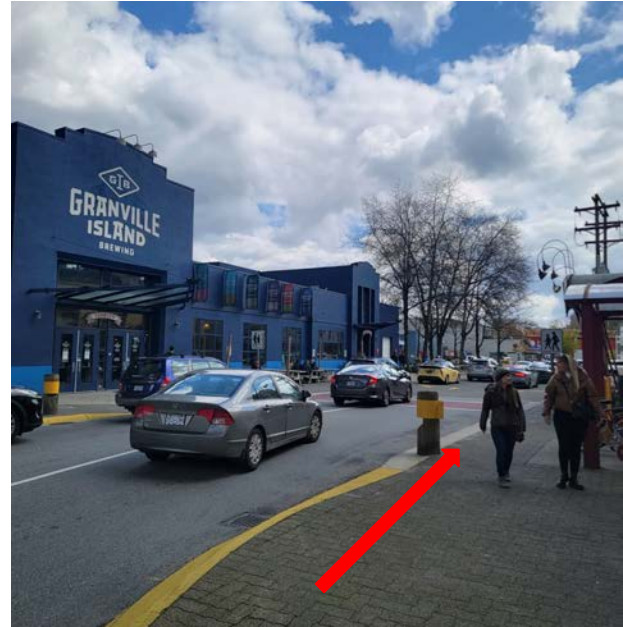
## Going to Performance Works from the Granville Island entrance



You will see the big GRANVILLE ISLAND sign. Keep going straight, across the bridge.



Turn right onto Cartwright Street after the yellow building. This is the Kids Market.



Keep walking down Cartwright St.



Keep walking straight along Cartwright Street.  
There isn't always a sidewalk so be careful.



Keep going straight

If you are looking for the bike valet,  
turn left here.

[Click here to see a picture.](#)





Performance Works is near the end of Cartwright St.  
You will walk past these building. They will be on your right.



Continue down Cartwright street.

You will pass a parking lot on your right before you reach Performance Works where the red arrow points.



Granville Island Hotel

Performance Works

Performance Works is behind the blue building.  
And across from the Granville Island Hotel.



## The Lobby



Go in through the double doors.  
There is no automatic push button.



This is what the lobby looks like when you walk in the door,  
before the show people often are lining up.  
Because the door to the theatre is at the end.

## The Front door



The double doors open outwards.  
They are not automatic.

## Box Office / Buying tickets



If you need to pick up your tickets or buy tickets, you can do that at this window, that is the box office.

It is just on your right when you walk in the door.

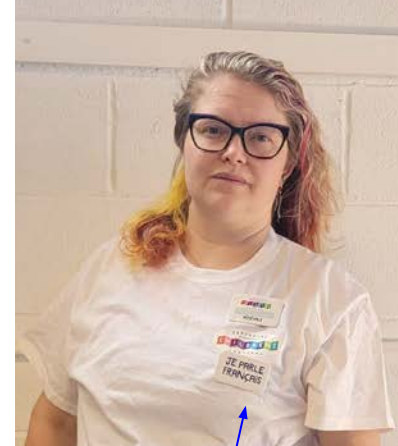
Just before the men's washrooms.



# Staff & Volunteers

Our staff & volunteers will have a pin or lanyard or t-shirt with our logo.

**If you need anything, ask them!**



These are the different pins and badges →

These buttons also tell you if this person knows other languages

# Going into the Theatre

Go through the double doors  
at the end of the lobby.

The doors open when it is time to go in.



Someone will scan your ticket at the door.

These are the doors you come in through.  
Then you walk around to the front.

## Inside the theatre



This is what the room looks like.

You will sit on one of those seats.  
There will be lots of other people too.

There will be different things on the stage  
for every show.

The stage is the floor.  
It is not up higher like it is in most theatres.



# Washrooms

There are Women's washrooms and Men's washrooms.

**Anyone is allowed to use any of the washrooms.**

**Please use the washroom where you feel most comfortable.**

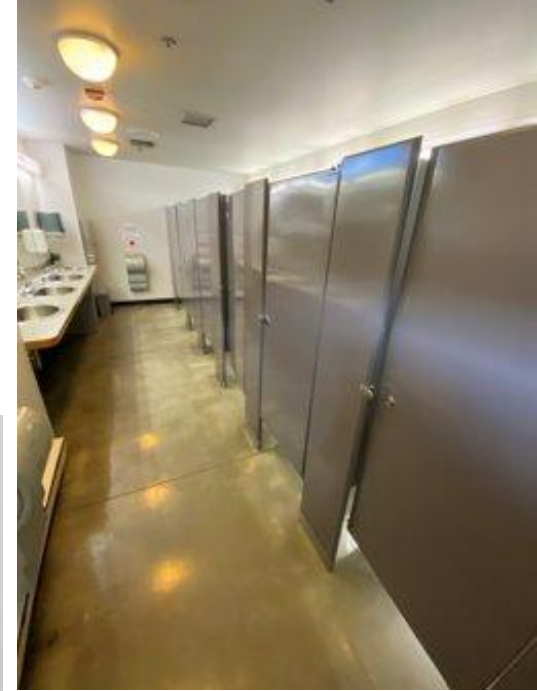
Both washrooms have an accessible stall and a place to change diapers.

## Women's Washroom



They are at the end of the lobby.

They are right next to the door to go into the theatre.



There are 6 stalls.  
The first stall  
is the accessible stall.

# Men's Washrooms

They are right next to the front door.

There are four urinals.

There is a baby change table  
next to the urinals.

Past the urinals are three stalls,  
the first one is the accessible stall.





# Baby Change Tables

There are two:

One in the Men's Washrooms,  
right next to the urinals.

One in the hallway  
to the Women's Washroom

The change table in this picture  
was moved into the Men's Washroom.  
There will be a different table  
in the same location.





It is halfway down the long lobby.

There will be yoga mats, comfortable seats, fidget toys and things for colouring.

## Chill Out Zone

For the Relaxed Performance

on June 3rd at 1:30pm

there will be a chill out zone in this area that is often used as a bar.



# Questions?

Do you have a question?  
Do you need more information?

Send us an email:  
[info@childrensfestival.ca](mailto:info@childrensfestival.ca)

Or you can call us Monday to Friday, 8:30 am to 4:00 pm:  
+1 604 708 5655



# Credits

This Visual Story was created with the help of a template created with the input of many consultants, patrons, artists and fellow arts organizations.

Special thanks to the PuSh International Performing Arts Festival, Intrepid Theatre, Vancouver Writers Fest, the Gateway Theatre and Jake Anthony.

Want to create a visual story for your show, event or venue?  
Email Anika and she will share the template: [anikasurtitles@gmail.com](mailto:anikasurtitles@gmail.com)

We welcome all feedback!  
You can email [anikasurtitles@gmail.com](mailto:anikasurtitles@gmail.com) and [info@childrensfestival.ca](mailto:info@childrensfestival.ca)